

# Fabric



Why Organizations Should be Leveraging  
Microsoft Fabric - A Webinar

July 24, 2025



# Housekeeping Items

## CONTENT AVAILABILITY



- The recording and slide deck will be sent to all registrants via email.

## NEED YOUR INPUT

- We will be polling the audience during this webinar. Your input will shape the discussion!

## CHAT AWAY!

- Let's keep it interactive! In addition to the polls, we will watch the chat and reply whenever possible.

# Meet Your Presenters

---



**Kai Andrews**

Data & AI Practice Director

[Email](#) | [LinkedIn](#)



**Cameron Prill**

Senior Data & AI Architect

[Email](#) | [LinkedIn](#)



**Jennifer Holcombe**

Data & AI Engineer

[Email](#) | [LinkedIn](#)

# What We Do

---



## Microsoft 365

- Exchange Online
- OneDrive
- Microsoft Teams Phone, Meetings, Rooms
- Endpoint Management
- SharePoint
- Microsoft 365 Copilot

## Microsoft Azure

- Azure Migrations
- Entra ID
- Azure Storage
- Azure VMware Solution
- Nutanix Cloud Clusters

## Modern Datacenter Architecture

- Nutanix
- Cohesity
- Cisco
- VMware (Broadcom)
- Pure Storage

## Security & Compliance

- Microsoft 365 Security
- Microsoft Intune
- Microsoft Purview
- Azure Security
- Arctic Wolf
- ThreatHunter MXDR

## Virtual Desktops

- Azure Virtual Desktop
- Citrix
- Horizon

## Data, AI, Apps & Automation

- Azure
- Azure Open AI
- Custom Agents
- Microsoft Power Platform
- **Microsoft Fabric**

## Business Transformation Services

- Organizational Change Management
- Strategic Advisory Services
- Cloud Service Provider
- Licensing Optimization

## Disaster Recovery

- Azure Site Recovery
- Nutanix
- Zerto (HPE)

## Cloud Data Protection

- Rubrik
- Cohesity

## Networking

- Cisco
- Meraki

Managed Services to  
Support All  
Solutions

# How We Do IT



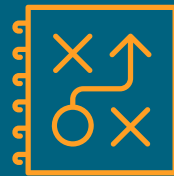
“eGroup Enabling Technologies has a plan and process to facilitate successful adoption of complex technology. Their approach is very practical, and end-user focused and has helped us plan and communicate better and respond more effectively across the company.”

**Neal Guernsey** CIO at SGT



## Consulting & Advisory

- Strategic Planning
- Tabletop Exercises
- Roadmaps & Budget
- Incident Response Planning
- Cost Optimization



## Planning & Design

The core of every successful initiative starts with thoughtful planning, design, and a shared vision for the outcome(s) desired.



## Pilot & Execute

Project success is founded in the validation of outcomes through testing. Meeting project timelines is achieved through the swift execution of planned tasks.



## Managed Services

- ThreatDefender MXDR
- Managed Azure
- Managed AVD
- Managed Servers
- Managed Endpoints
- Managed DR
- Managed Backup

Organizational Change Management (OCM)

# Why We're Different

---



- 9x Microsoft Partner of the Year
- 30+ Years of Experience
- Year-Over-Year 98%+ Customer Satisfaction Score
- Strategic Advisory Services
- Award-Winning Organizational Change Management Team
- We're 1 out of 18 Nutanix Premier Partners nationwide
- Fully-Internal; U.S. based Managed Services Team
- Our Managed Security Services Team customizes response mechanisms (integrate vs. overwrite) with the client's current operations and processes
- Microsoft Intelligence Security Association (MISA) Member

## OUR MICROSOFT ADVANCED SPECIALIZATIONS

### Modern Work

- Teamwork Deployment
- Calling for Teams
- Endpoint Management

### Security & Compliance

- Information Protection & Governance
- Threat Protection
- Identity & Access Management
- Cloud Security

### Azure Apps & Infrastructure

- Azure Virtual Desktop
- Azure VMware Solution
- Infra and Database Migration to Azure





## Goal

Dive into Microsoft Fabric and understand its place in an organization's modern data architecture. We will also see data ingestion, transformation, storage and analytics examples in action.



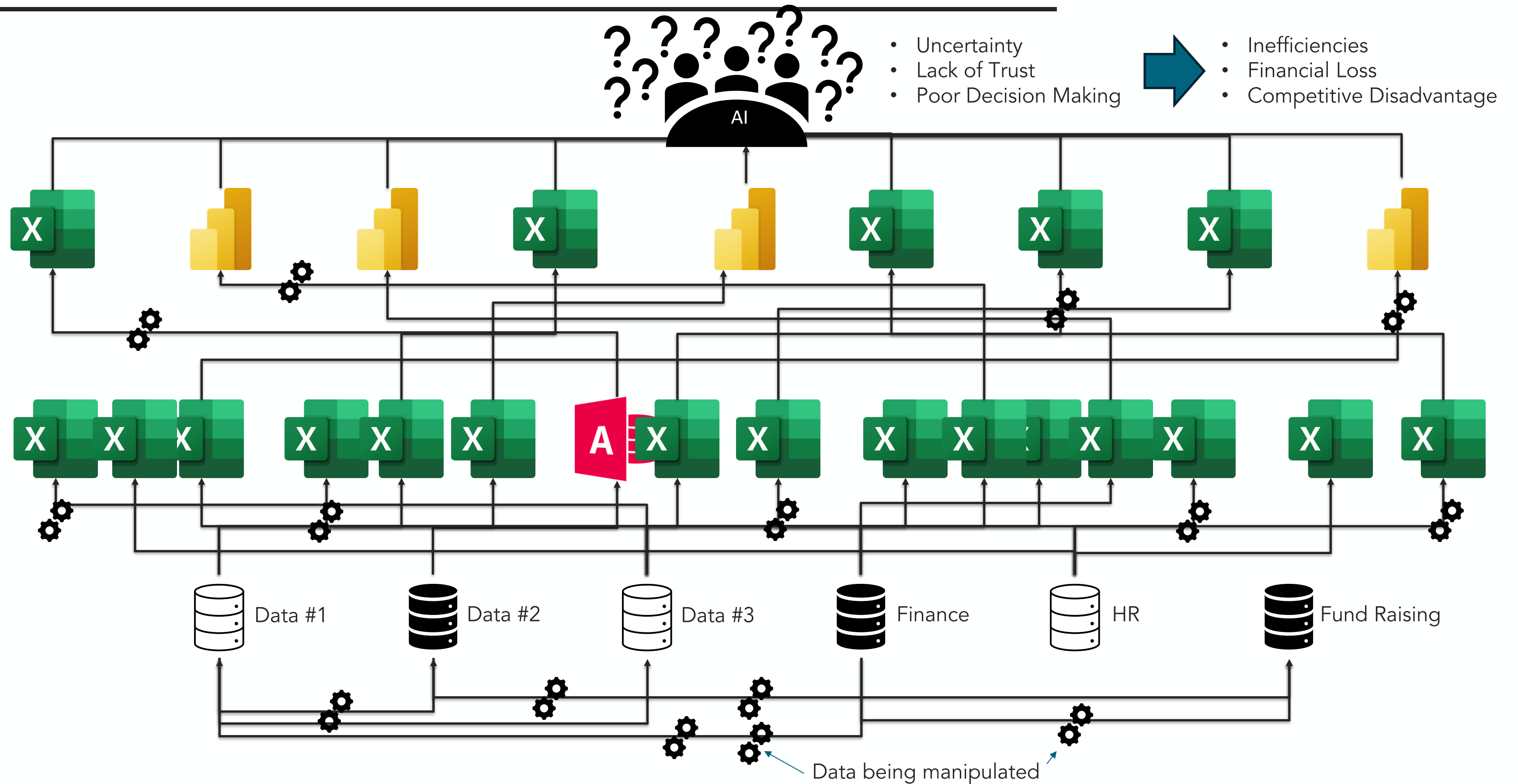
## Agenda

- 1- Fabric Overview
  - Why Fabric
  - Capacity & Pricing
  - Implementing Solutions
  - Governing Data
- 2- Fabric Functionality/Demos
  - Storage Options
  - Ingestion/Transformation
  - Analytics (with Copilot
- 3- Next Steps

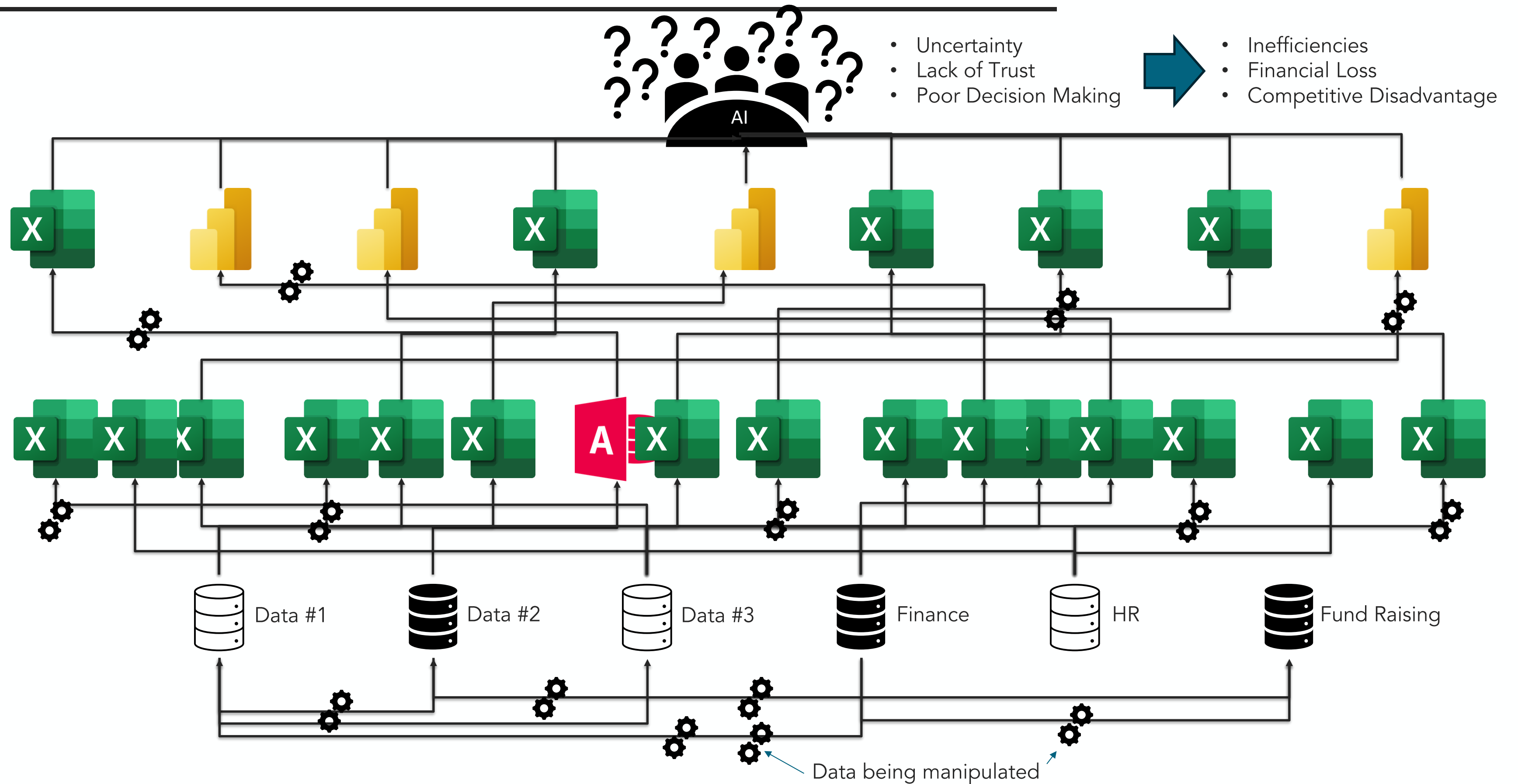
**The story you are about to hear is real.  
Only the names have been changed to protect the innocent...**



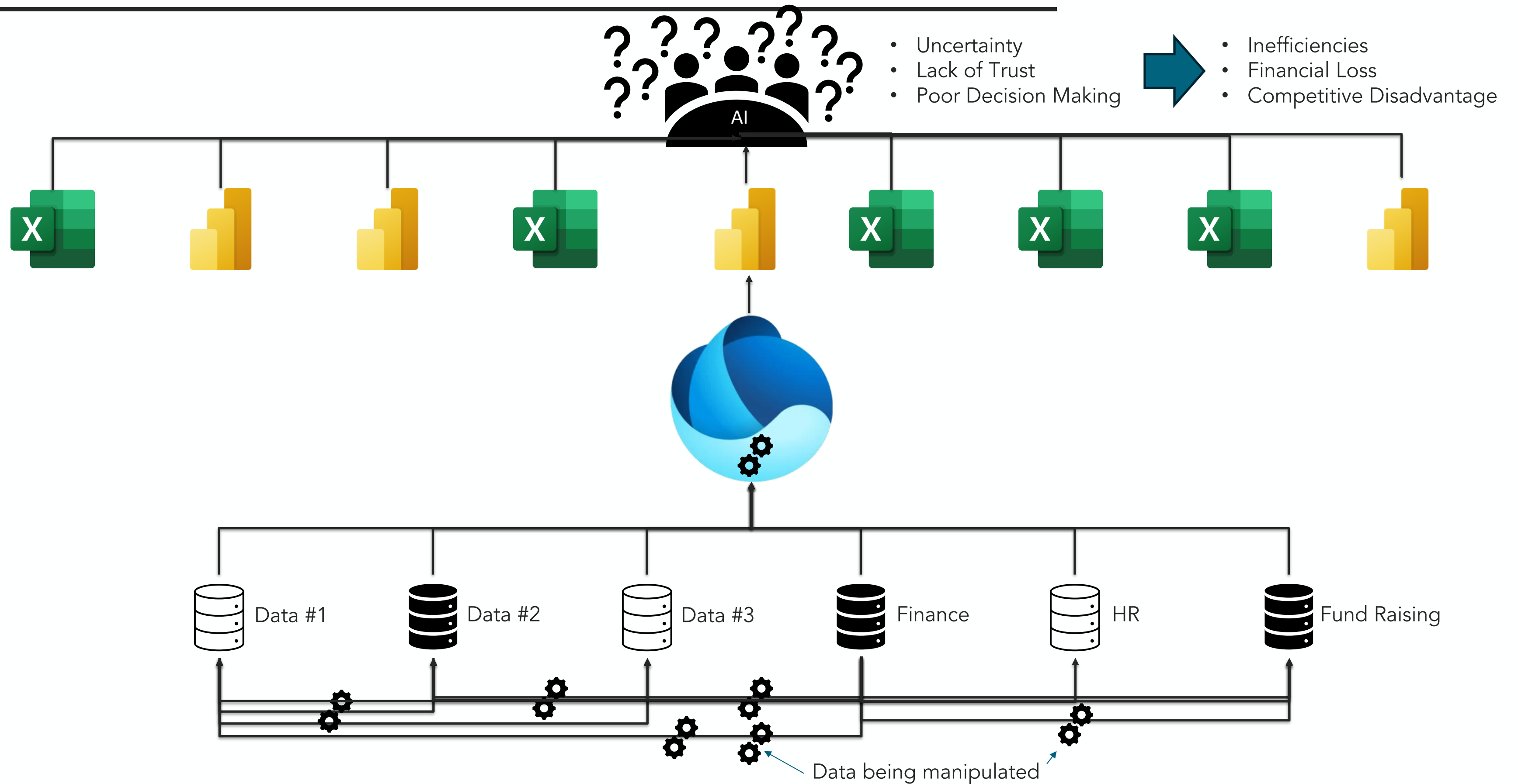
# Why This All Matters



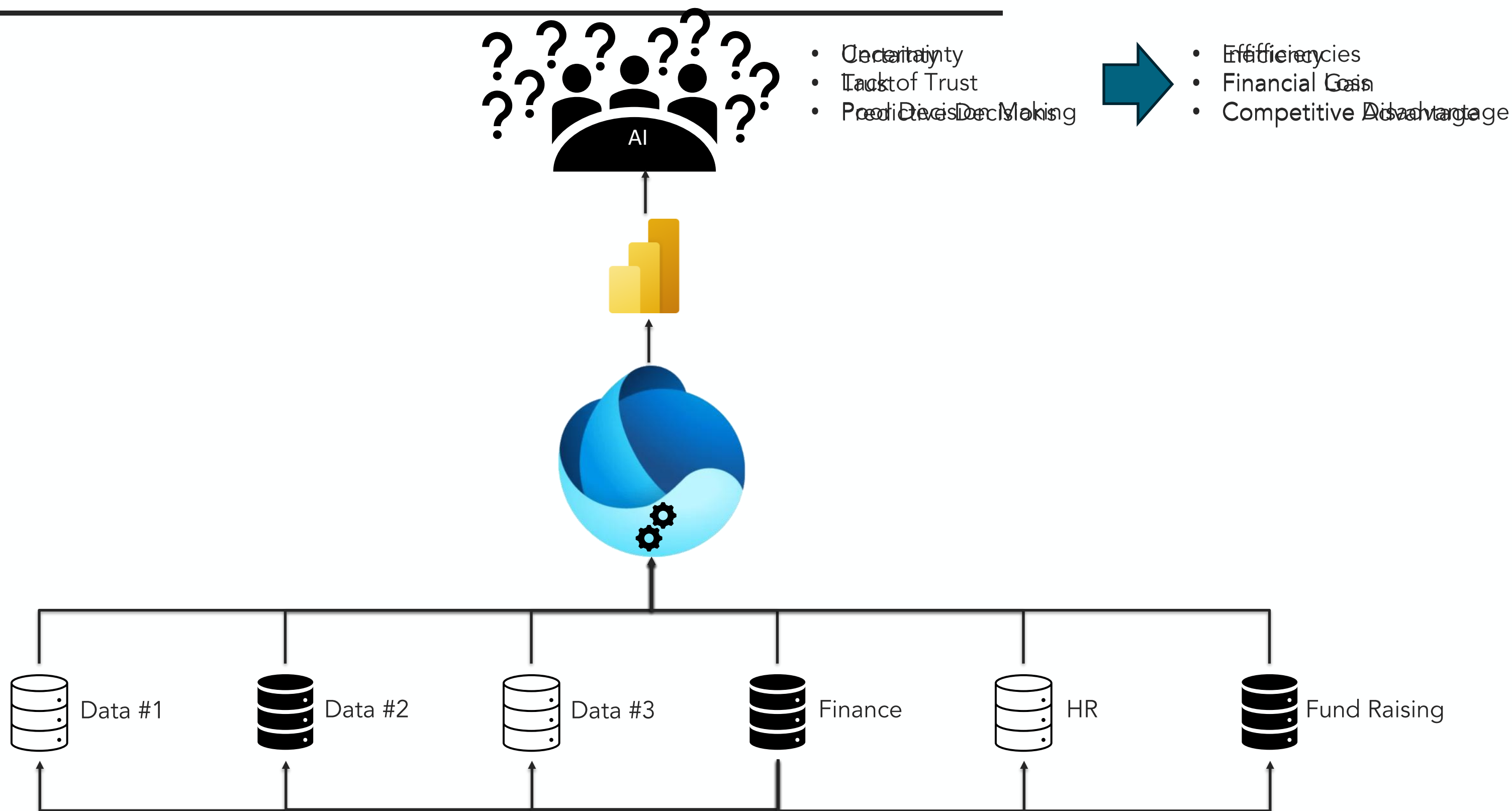
# Why This All Matters



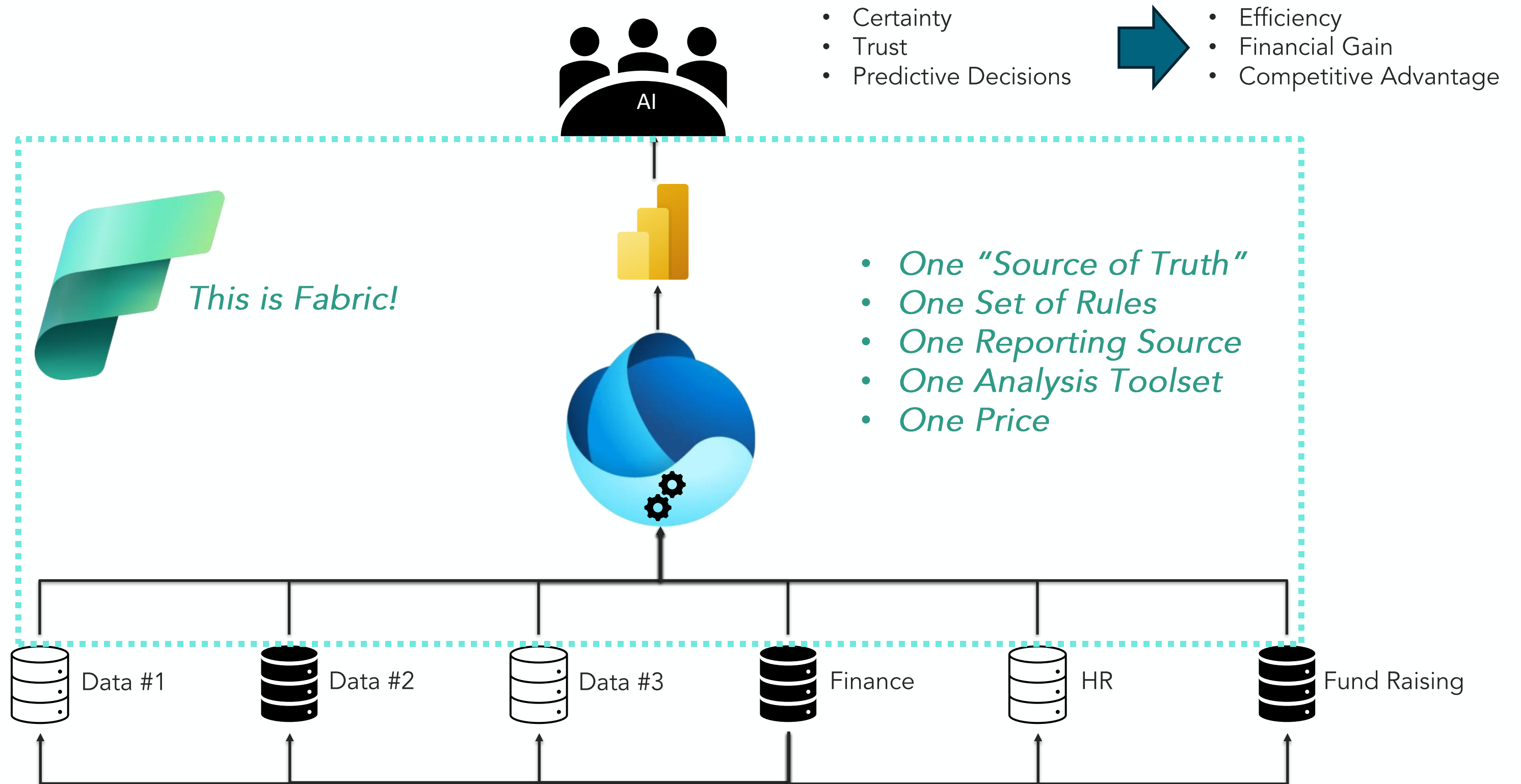
# Why This All Matters



# Why This All Matters



# Why This All Matters



# Fabric Modules

---



The unified data platform for AI transformation



Data  
Factory



Analytics



Databases



Real-Time  
Intelligence



Power BI



Industry  
Solutions



Partner  
Workloads



AI



OneLake



Purview

# Step 1 - Determine Capacity Needs

Microsoft Fabric SKU Estimator (preview)

This preview of the Microsoft Fabric SKU Estimator is made available under Microsoft's [Terms of use](#). Estimates generated may not be accurate.

Tell us about your data and we'll generate a SKU recommendation based on your capacity requirements.

Data Information

Total size of the data when compressed (GiB)

100

Number of daily batch cycles

1

Number of tables across all data sources

10

Fabric usage

Select the workloads and features that you plan to use in Fabric. Some may require additional information.

☐ Data Factory

☐ Spark Jobs

☐ Data Warehouse

☐ Ad-Hoc SQL Analytics

☐ Data Science

Power BI

☐ Power BI

☐ Power BI Embedded

Real-Time Intelligence

☐ Eventstream

☐ Eventhouse

☐ Activator

Microsoft Fabric Databases

☐ SQL database in Fabric

The Microsoft Fabric SKU Estimator is a tool that provides an estimate of the suggested Fabric SKU and associated storage based on a user's entry of various inputs across the Fabric workload experiences. The Microsoft Fabric SKU Estimator is not a binding offer nor a guarantee of the final cost or availability of the product. This estimate should be regarded only as a guidance and not incorporated into a contractual agreement. The actual SKU required for usage and associated cost may vary depending on the region, availability, workload usage, number of users, and other factors. Microsoft reserves the right to modify or discontinue the Fabric SKU Estimator at any time without notice.

Calculate

Estimation

Enter the information requested. We'll estimate a Fabric SKU for you, based on your capacity requirements.

Start your free Microsoft Fabric trial now. [Learn more](#)

# Step 2 - Calculate Pricing Options

Region:

East US 2

Currency:

United States – Dollar (\$) USD

Display pricing by:

Month

SKU	Capacity unit (CU)	Pay-as-you-go	Reservation
F2	2	\$262.80/month	\$156.334/month ~41% savings
F4	4	\$525.60/month	\$312.667/month ~41% savings
F8	8	\$1,051.20/month	\$625.334/month ~41% savings
F16	16	\$2,102.40/month	\$1,250.667/month ~41% savings
F32	32	\$4,204.80/month	\$2,501.334/month ~41% savings
F64	64	\$8,409.60/month	\$5,002.667/month ~41% savings
F128	128	\$16,819.20/month	\$10,005.334/month ~41% savings
F256	256	\$33,638.40/month	\$20,010.667/month ~41% savings
F512	512	\$67,276.80/month	\$40,021.334/month ~41% savings
F1024	1,024	\$134,553.60/month	\$80,042.667/month ~41% savings
F2048	2,048	\$269,107.20/month	\$160,085.334/month ~41% savings

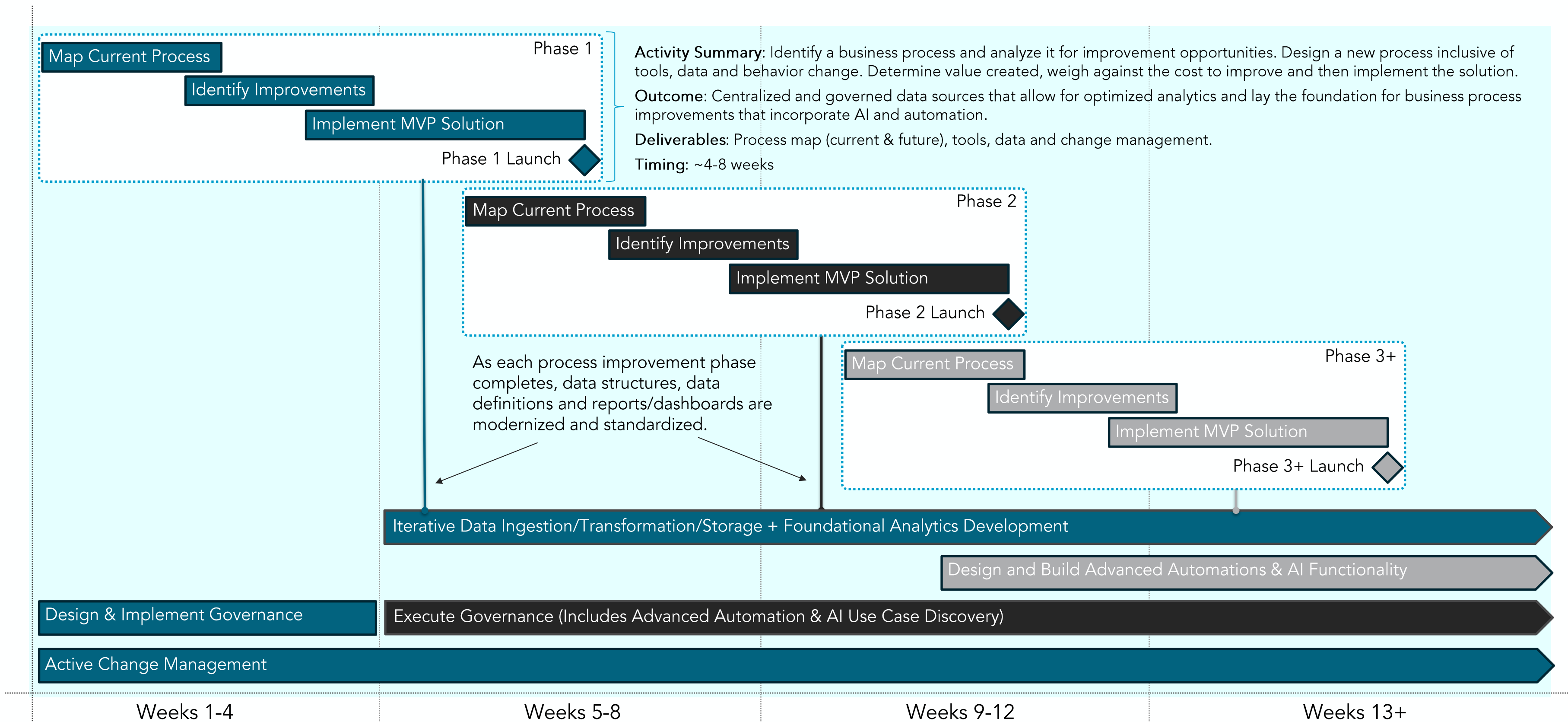
<https://azure.microsoft.com/en-us/pricing/details/microsoft-fabric>

How Much Fabric Do I Need?



# Implementing Modern Data Solutions

- = Crawl Phase
- = Walk Phase
- = Run Phase



# Data Governance Primer

Structures	Members	Meeting Cadence	Lessons Learned
<b>DATA GOVERNANCE EXECUTIVE SPONSOR</b>  Provide overarching strategic direction	<div>Executive Sponsor</div>	Quarterly meeting to review progress	<b>Engaged Sponsorship</b> - find an executive sponsor that has adequate time and is willing to invest and make difficult decisions.
<b>DATA GOVERNANCE COUNCIL</b>  Establish data governance priorities	<div>Program Manager Data Governors IT Director, BI</div>	Monthly meeting to approve plans and review activities	<b>Right Sized Council</b> - engage only those members who are actively working on data governance initiatives. Rotate membership as needed to keep perspectives fresh and relevant.
<b>BUSINESS AREAS (CAPABILITIES)</b>  Define and monitor data standards; resolve data quality issues	<div>Capability #1 Data Governor Stakeholders</div> <div>Capability #2 Data Governor Stakeholders</div> <div>Capability #3 Data Governor Stakeholders</div> <div>Capability #4 Data Governor Stakeholders</div> <div>Capability n+ Data Governor Stakeholders</div>	Regular meetings scheduled as appropriate for each group	<b>Focus on Business Ownership</b> - data needs to be governed by business teams, not IT or the data governance program.
<b>PROJECT TEAMS</b>  Identify, define and implement data standards	<div>Project Manager Data Steward Data Custodian (Other Resources) Project 1</div> <div>Project Manager Data Steward Data Custodian (Other Resources) Project 2</div> <div>Project Manager Data Steward Data Custodian (Other Resources) Project n+</div>	Regular meetings scheduled as appropriate for each project	<b>Fund Projects</b> – the data governance program does not execute change, projects do.  <b>Generate Value</b> - Demonstrate value early and often. Even a simple report can spread goodwill. Iterate and don't focus on perfection.

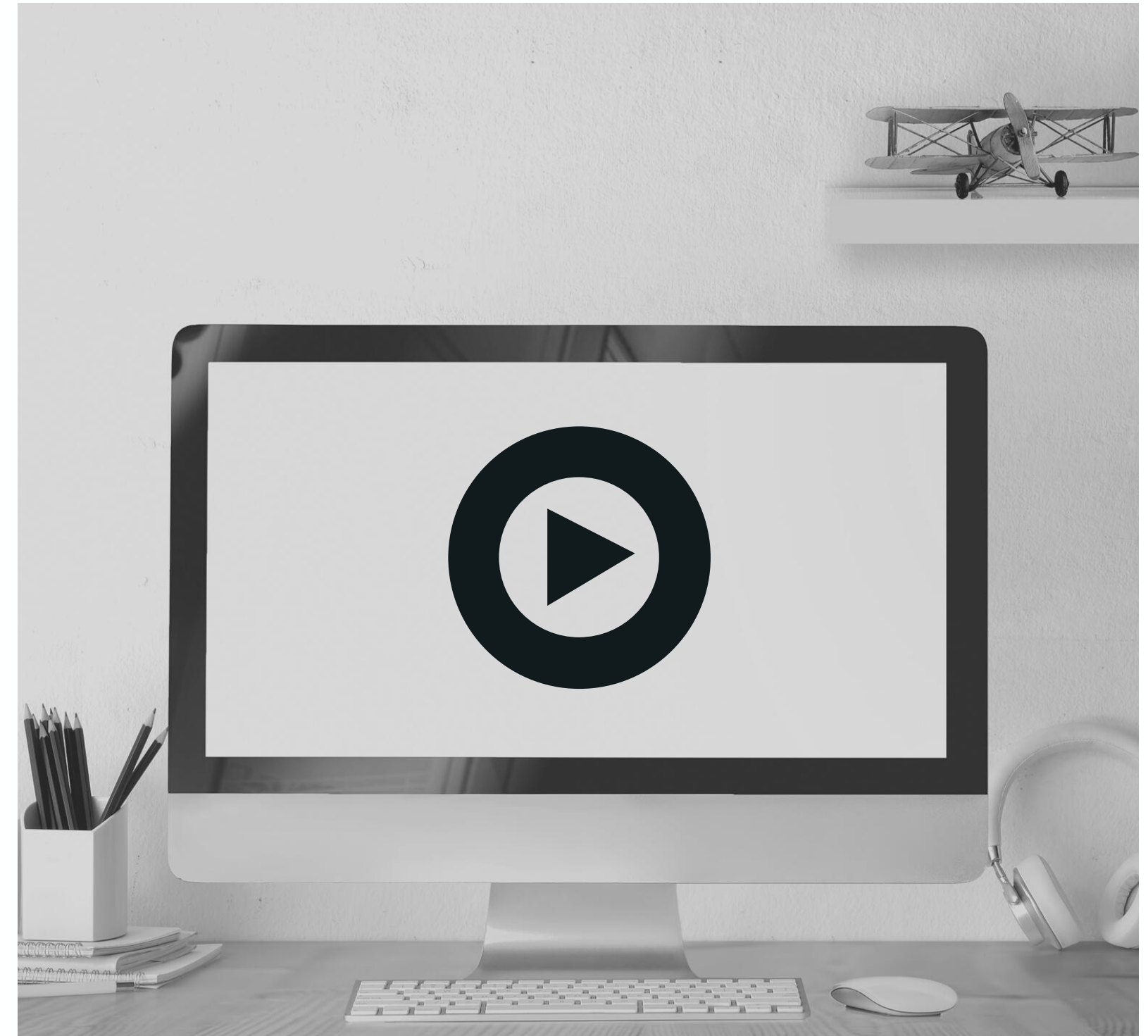
# Fabric Storage Options

	Warehouse	Lakehouse	Eventhouse	SQL Database (Preview)	Cosmos DB (Preview)
Type of Data	Structured, semi-structured (JSON)	Unstructured, semi-structured, structured	Unstructured, semi-structured, structured	<i>Structured, semi-structured, unstructured</i>	<i>Focus is on semi-structured data</i>
Data Organized By	Databases, schemas, and tables	Folders and files, databases, and tables	Databases, schemas, and tables	<i>Databases, schemas, tables</i>	<i>Containers, schema-agnostic</i>
Multi-table Transactions	Yes	No	Yes, for multi-table ingestion	<i>Yes, full ACID compliance</i>	<i>No</i>
Best Fit Developers	Database & Warehouse Developers; Data Architects & Engineers	Data Scientists & Engineers	Data Scientists & Engineers & App Developers	<i>AI &amp; App Developers; Database Developers &amp; Admins</i>	<i>AI &amp; App Developers; Database Developers &amp; Admins</i>
Primary Language	SQL	Spark (Scala, PySpark, Spark SQL, R)	KQL	<i>SQL</i>	<i>NoSQL</i>
Typical Use Case	SQL users who want business intelligence, reporting capabilities	Want to store and/or analyze multiple types of data; general-purpose	Real-time data storage & analysis; specialized	<i>Want SQL database in the cloud that is connected to Fabric capabilities</i>	<i>An AI app developer who wants to store semi-structured data and leverage it</i>

**Microsoft Fabric Decision Guides:** [Choose a Data Store](#), [Choose between a Warehouse and Lakehouse](#), [Choose a SQL Database](#)

**Note:** Power BI Datamarts are being deprecated and will be removed on October 1, 2025.

# DEMO TIME!



# We Can Help

---



## ACQUIRE

1. Fabric Licensing
2. Power BI Licensing

## IMPLEMENT

1. In a Day
  - Fabric in a Day
  - Dashboards in a Day
2. In a Month
  - Modern Data Solution Design
  - Power BI Health Assessment
3. Scale
  - Modern Data Solution Implementation
  - Power BI Reporting & Analytics Implementation

## MANAGE

1. Data as a Service



THANK YOU!